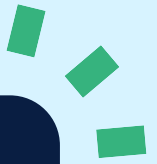


prenda

Curriculum Overview



Prenda makes it possible for kids to develop strong academic skills while deepening their love for learning, building relationships, and increasing their intrinsic motivation.

Here's how we do it.

Connect Mode

Connect Mode is designed to help microschools establish a culture of empowered learning, self-regulation, and intrinsic motivation. Connect Mode is based on Prenda's CAMP program.

We focus on...

- C Community:** Know how to take care of relationships within the learning community
- A Autonomy:** Use autonomy to govern their mind and body, their time, and their learning
- M Mindset:** Apply 3 specific mindsets: growth mindset, challenge mindset, and wonder mindset
- P Purpose:** Develop a personal purpose and motivation for learning that is relevant to their interests



"I am becoming an
empowered learner"

Connect Tools

- 3-week student orientation program
- Empowerment Principles Resource Library: hundreds of interactive activities, videos, and discussion/journal prompts that help kids become empowered learners
- Core Values



Conquer Mode

Parents, students, and guides work together to curate each child's Conquer Mode experience from a suite of vetted options or families can bring an alternative academic curricula that works for their child.

Here's how it works...

- 1** Adaptive diagnostics identify each student's Learning Frontier in math and reading.
- 2** Guides, parents, and students select curriculum, set levels, and establish year-long core academic goals.
- 3** Progress is monitored by students, guides, and parents.

Conquer Tools

Language

- Treasure Hunt Reading
- Lexia
- NoRedInk
- CommonLit
- Manuscript & Cursive
- Typing Club
- Writer's Guild
- Writer's Clubhouse
- Writer's League

Math

- MathSeeds
- Zearn
- CTC
- Khan Academy
- Khanmigo Tutor

Diagnostics

- i-Ready Diagnostics and adaptive instructional paths for math and reading

Printed materials provided by Prenda when applicable.



"I can learn anything with courage and patience"

Collaborate Mode

Collaborate Mode is a collection of whole group activities that help students develop leadership and interpersonal skills as they explore their interests within social studies and science.

These activities include...

- 1 An inquiry-based research process using Prenda created experiences augmented by provided resources.
- 2 Collaborative, inquiry-based science discovery through provided resources.
- 3 Socratic Discussions, Debates, Problem Solving (coding, logic, and math).

Collaborate Tools

Social Studies

Extensive library of Prenda-created and curated history and geography content. Activities include resources from:

- BrainPOP
- Britannica School
- Kids Discover
- World Book Online
- Core Knowledge

Science

- Mystery Science
- Generation Genius
- SquidBooks

And more!

- 3 Act Math
- Math games
- Logic puzzles
- Debate
- Socratic discussions



"I am an important part of something bigger than myself"

Create Mode

Create mode offers students the opportunity to explore interests and express themselves through project-based learning. An extensive library of hands-on, engaging projects is provided in Prenda World.

Here's how it goes...

- 1 Students choose from projects centered on art, music, theater, and STEM-based problem-solving.
- 2 Students use their creativity, curiosity, and ingenuity to research, write, design, perform, paint, code, sell, grow, or invent.
- 3 Students share and log their learning into their Student Portfolio.

Create Tools

Project Based Learning

Extensive library of Prenda-created and curated content. Projects include:

- **Slideshows & Digital Presentations**
– **Posters & Infographics**
- **Art Projects**
- **Dioramas & 3D Models**
- **Creative Writing & Comics**
- **Videos & Stop-Motion Animations**
- **Board Games & Card Games**
- **Audio Projects & Podcasts**
- **Performance Pieces**



"I use my learning in real and
imaginative ways"

Engaging Extras

Learners Lab

Learners Labs are monthly national online student-led showcases and theme exploration sessions. They are suitable for all grade levels and ages!



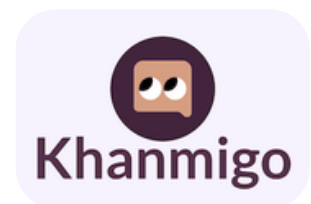
Community Quests

Community quests are Prenda-wide challenges, designed to encourage students across the country to try new things, apply their learning, and show off their skills!



Math Tutoring

Simply input a math problem from any curriculum and experience an infinitely patient Socratic-style math tutor guiding you through step-by-step.



What's next...

Create a Prenda World Account

Want to start your own microschool, powered by Prenda?

Create a free Prenda World account and find out if guiding a microschool is a good fit for you!



**Start My
Microschool**

Find a Microschool Near You

If you're a parent, find a microschool near you.

If there's nothing nearby yet, consider becoming a guide yourself or telling a friend about guiding!



**Microschool
Map**

prenda