



prenda

Curriculum

Overview

Prenda makes it possible for kids to develop strong academic skills while deepening their love for learning, building relationships, and increasing their intrinsic motivation.

Here's how we do it.

I am becoming an empowered learner

Connect Mode

During Connect Mode, students develop the skills and mindsets of an empowered learner. We help students take responsibility for their learning as they create a vision and purpose for their lives, set personal goals, and persevere through productive struggle.



Connect Tools

- 3-week student orientation program
- Empowerment Principles Resource Library: hundreds of interactive activities, videos, and discussion/journal prompts that help kids become empowered learners
- Core Values



I can learn anything with courage and patience

Conquer Mode

In Conquer Mode, students move through a rigorous mastery-based, personalized curriculum as they set daily commitments based on the long-term goals they define at the beginning of the year. Conquer learning tools are a blend of adaptive digital programs and paper-pencil programs. Guides, parents, and students collaborate to craft each student's unique experience!



Conquer Tools

Language

- Treasure Hunt Reading
- Lexia
- NoRedInk
- LightSail
- CommonLit
- Manuscript & Cursive
- Typing Club
- Writer's Guild
- Writer's Clubhouse
- Writer's League

Math

- MathSeeds
- Zearn
- CTC
- Knowre
- Printed materials included when applicable


Diagnostics

i-Ready Diagnostics and adaptive instructional paths for math and reading

I am an important part of something bigger than myself

Collaborate Mode

In Collaborate Mode, students participate in interactive experiences as they explore science and social studies through whole-group, inquiry-driven, hands-on experimentation, research, discussion, play, and debate. Students also test their problem-solving skills through math application puzzles and logic.



International Space Station ▲

It took the work of scientists and engineers from 16 different countries to build the International Space Station - the largest object ever sent into space. Six astronauts can live there at the same time, conducting research and learning as much about space and planet Earth as possible.

Essential questions:

- How was the International Space Station built?
- How big is it?
- Why is it important?

Suggested Activity: [Picture It!](#)

Activity Library

International Space Station Kids | International Space Station | International Space Station | ISS: A Laboratory in Space

Collaborate Tools

Social Studies

Prenda-curated history and geography "Spotlights" featuring...

- BrainPOP
- Britannica Kids
- Kids Discover
- World Book Online
- Core Knowledge

Science

- Mystery Science
- Generations Genius
- SquidBooks

And more!

- Brilliant.org
- 3 Act Math
- Math games
- Logic puzzles
- Debate
- Socratic discussions



I use my learning in real and meaningful ways

Create Mode

Students explore interests and express themselves through project-based learning. Older students may select from Prenda's extensive project library or create their own projects. Younger students participate in more structured experiences as they explore the arts, performance, and STEM.



ENGINEERING

Design a Water Wheel

Start Project

How did people survive before they could plug things into outlets and get electrical power?



NATURE

Create a Coral Reef Diorama

Start Project

Did you know The Great Barrier Reef is the largest living thing on Earth and is visible from space? It is the size of 70 million football fields! It is also one of the most beautiful environments on Earth.



Create Tools

Project Based Learning

- The Arts Museum
- Center Stage
- Tinker Time
- Engineering
- Writing
- Performance
- Coding
- Service
- Entrepreneurship

That's not all...

Engaging Extras

The Mini Skill Library offers students targeted, on-demand opportunities to practice new skills. These lessons are short, interactive, and can be used as a group or individually.

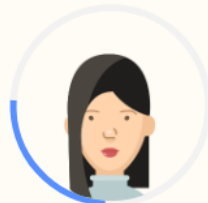


Virtual Expedition -STEM-

w/ Veterinarian Katie Barrowclough

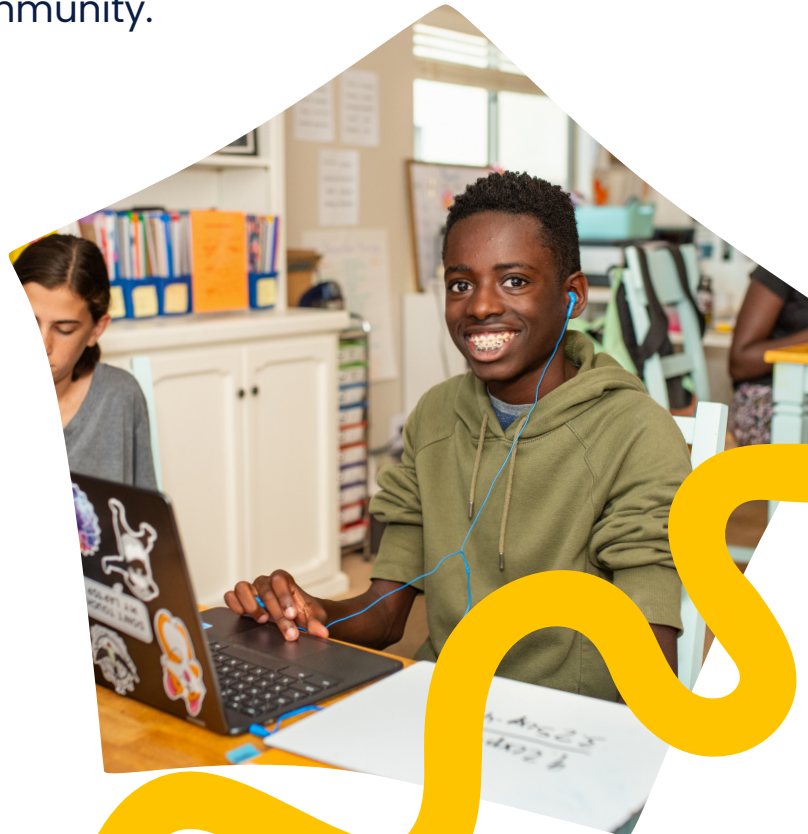
Virtual Expeditions are weekly live events showcasing different careers, cultures, hobbies, or community challenges. These live Zoom calls offer a fun enrichment to the microschool experience and help students feel connected to the wider Prenda community.

24-hour live math tutoring is available for all Prenda students. Your students can get real-time help in whatever curriculum and level they're working on! It's pretty awesome.



FINDING TUTOR

Less than a minute...



So What's Next?

**Want to start your own
microschool, powered by
Prenda?**

**Start My
Microschool**

Create a free Prenda World account
and find out if guiding a microschool
is a good fit for you!



**If you're a parent, find a
microschool near you.**

**Microschool
Map**

If there's nothing nearby yet, consider
becoming a guide yourself or telling a
friend about guiding!

